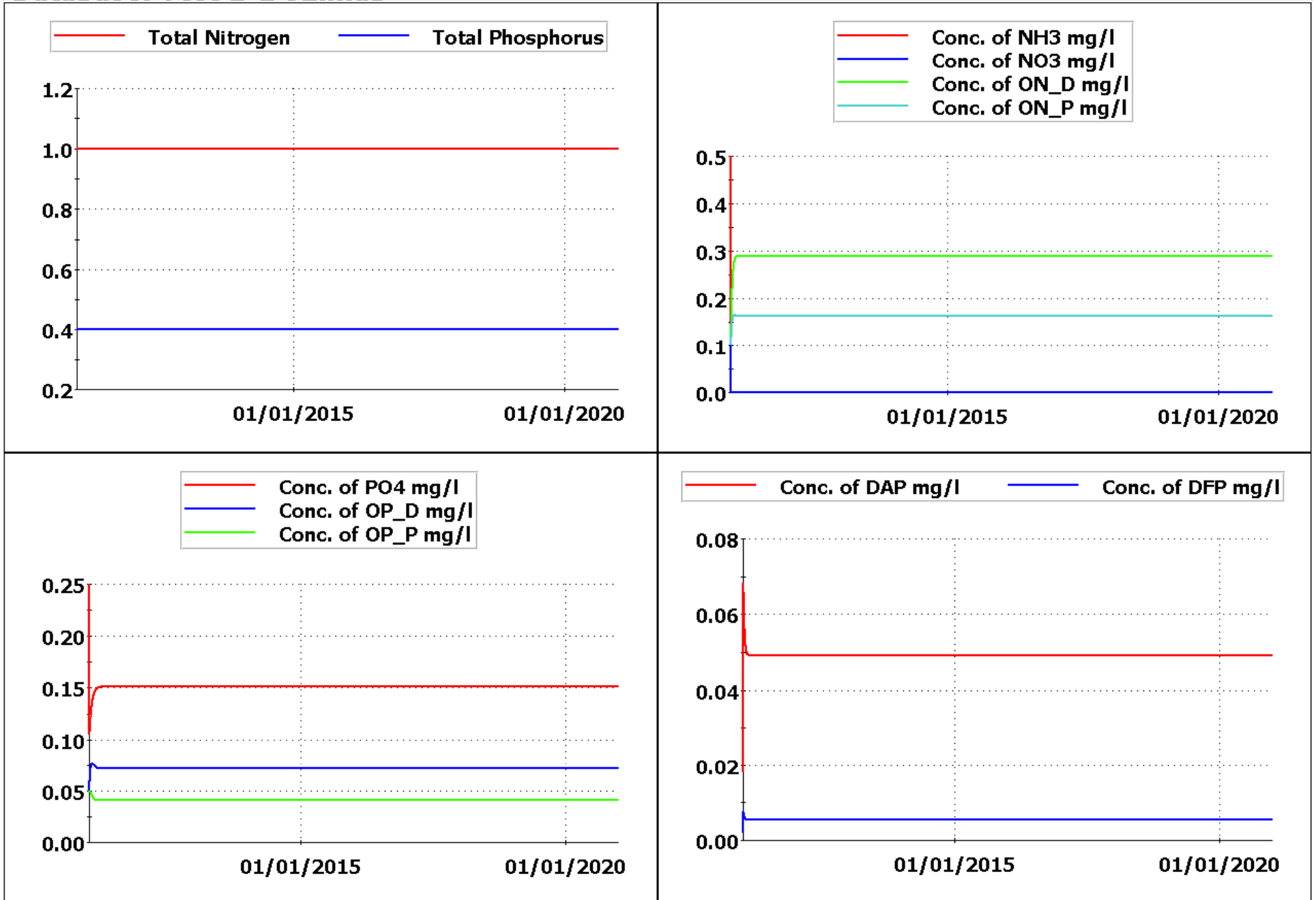


| Case | Test | Comments |
|-------------|---|-----------------|
| 1.1 | TN = 1.0 mg/l; TP = 0.4 mg/l | Done |
| 1.2 | TN = 1.0 mg/l; TP = 0.4 mg/l | Done |
| 1.3 | TN = 0.2 mg/l; TP = 0.05 mg/l; CBOD_f = 0.133 mg/l; CBOD_s = 1.2 mg/l | Done |
| 1.4a | TC = 1.0 mg/l; TIOC = 0.82 mg/l; OC_P_R = 0.18 mg/l | Done |
| 1.4b | TC = 1.0 mg/l; TIOC = 1.0 mg/l | Done |
| 1.5 | TN = 0.19 mg/l; TP = 0.05 mg/l; TC = 0.95 mg/l | Done |

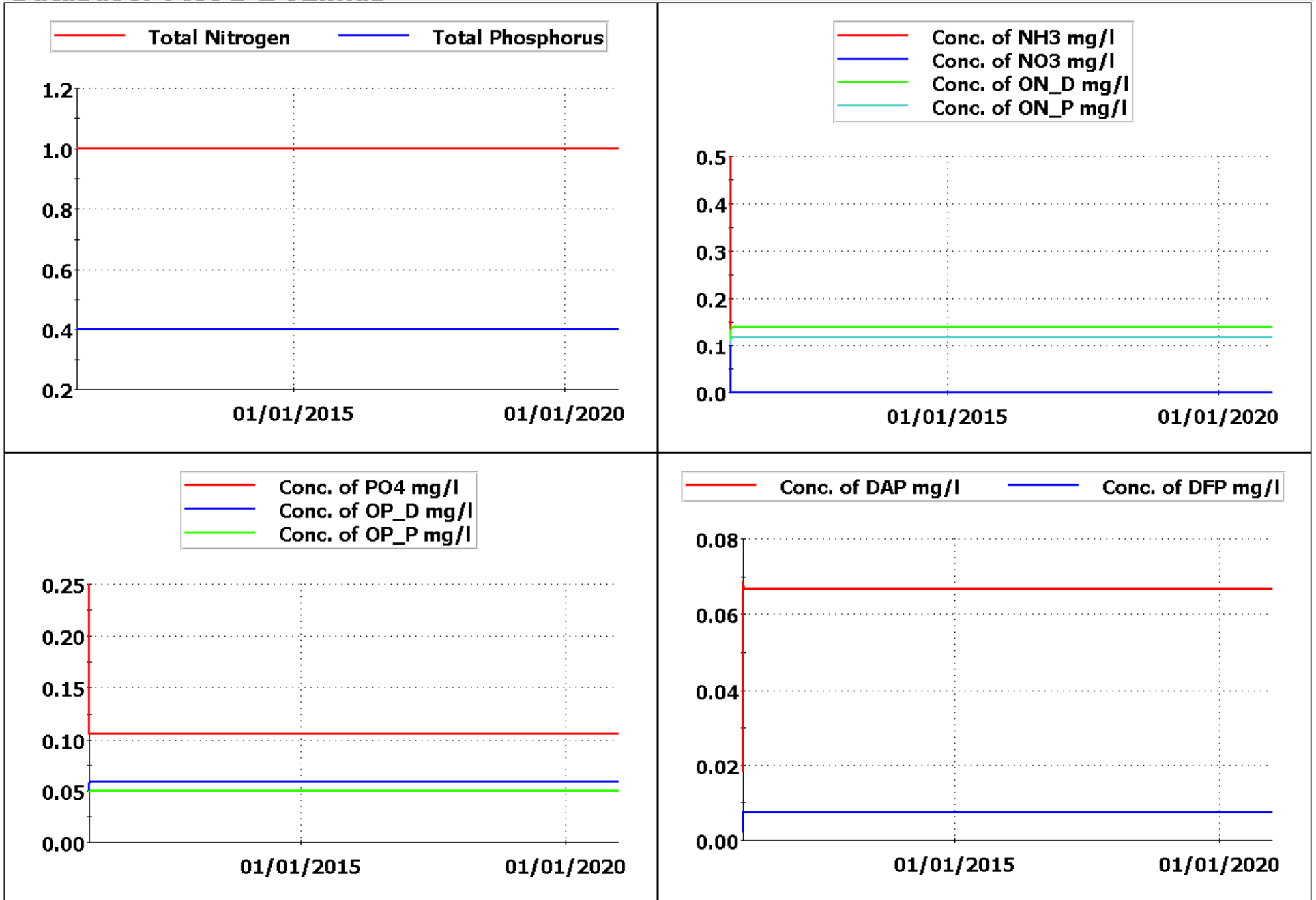
Test 1.1 – Total Nutrient Concentration in CSTR with No Flow

Database: Test 1-1 02.mdb



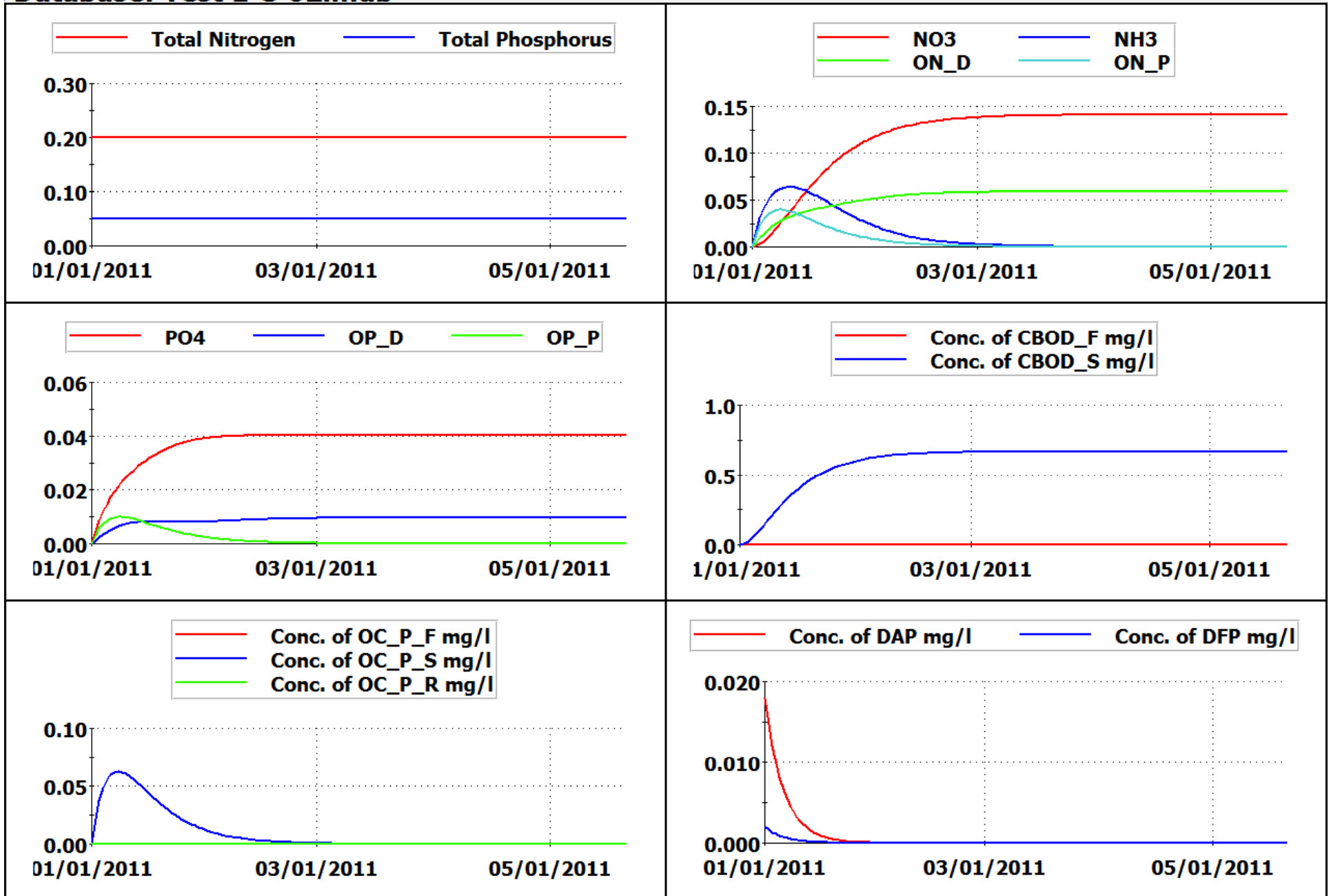
Test 1.2 – Total Nutrient Concentration in CSTR with Flow

Database: Test 1-2 02.mdb



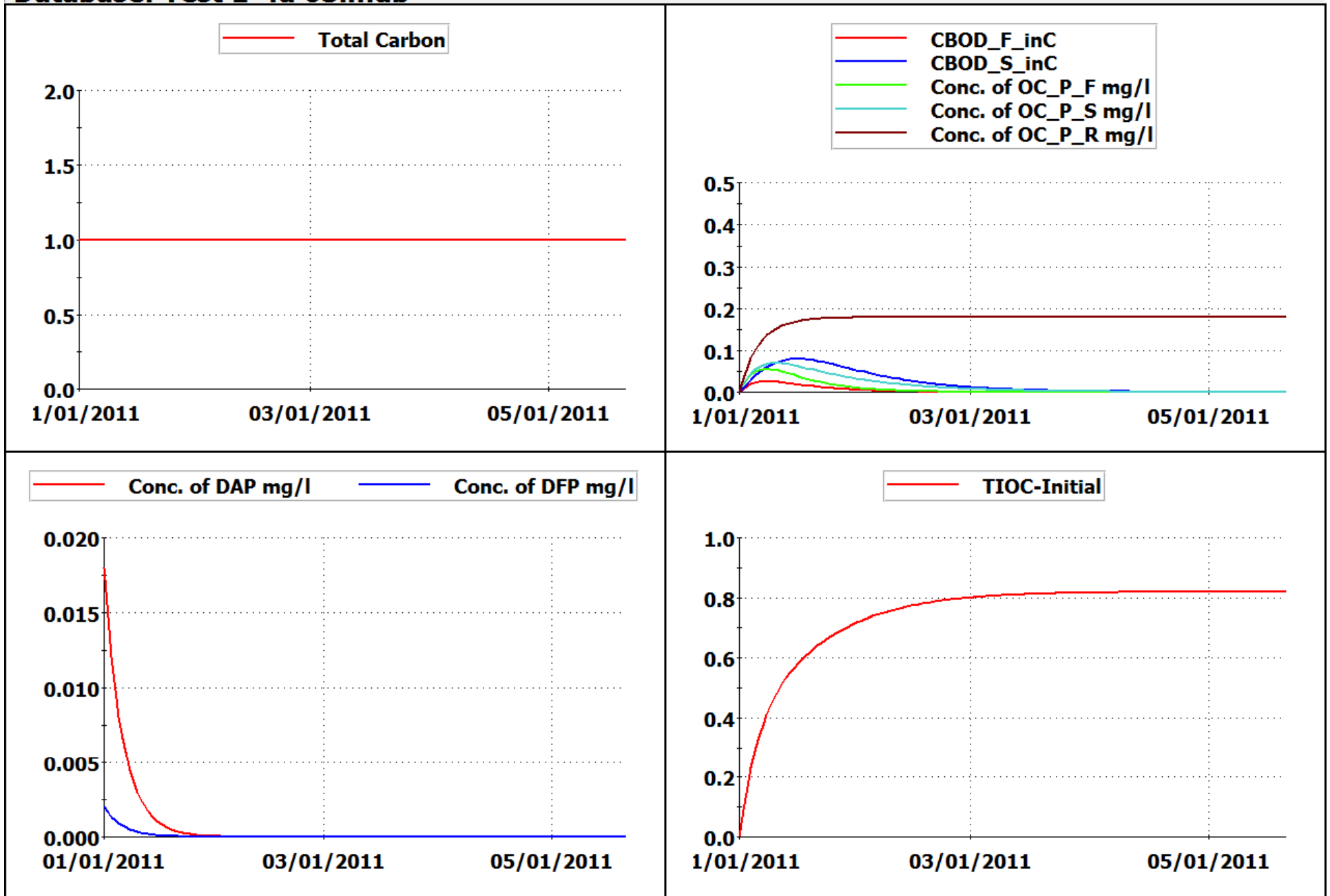
Test 1.3 – Phytoplankton to Inorganic Nutrient Pathway in CSTR with No Flow

Database: Test 1-3 02.mdb



Test 1.4a – WQCBM Phytoplankton to Inorganic Carbon Pathway in CSTR with No Flow

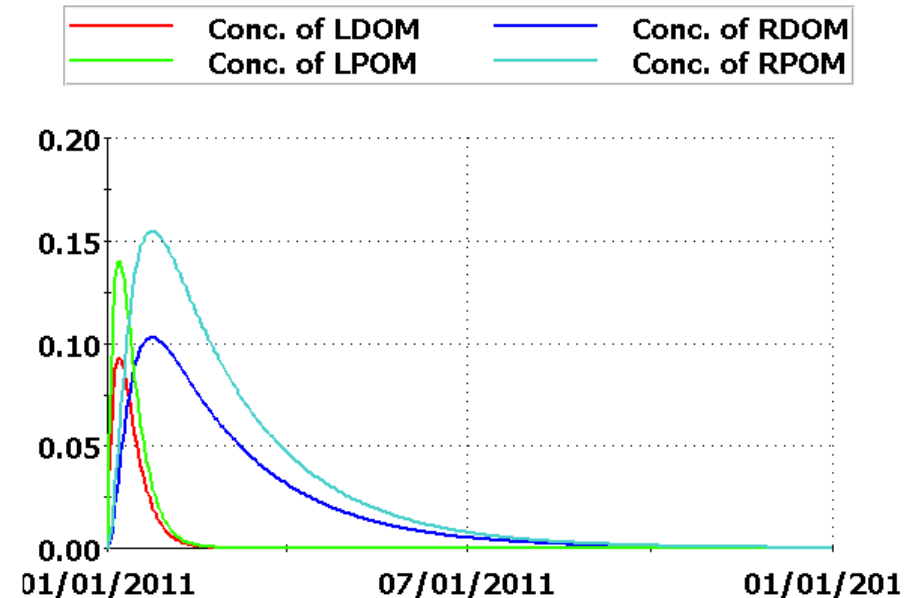
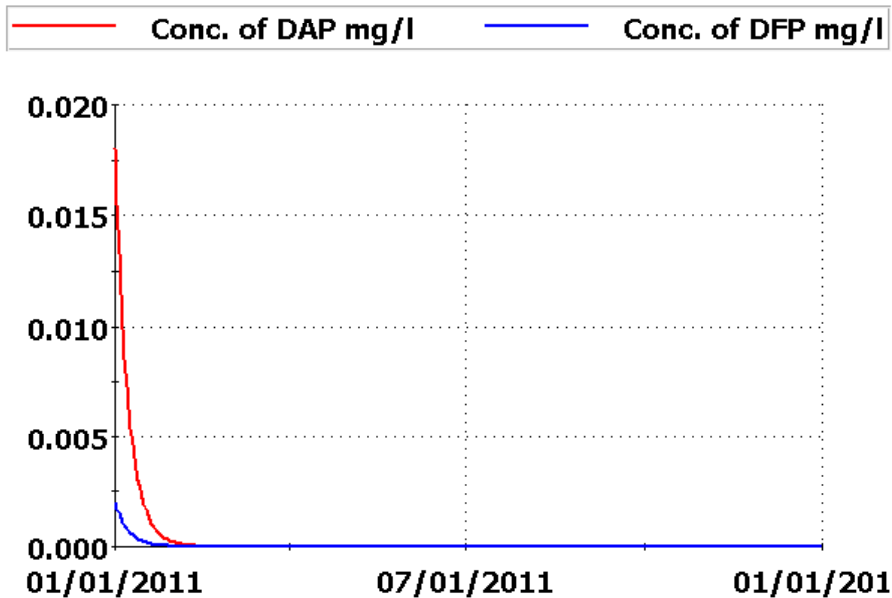
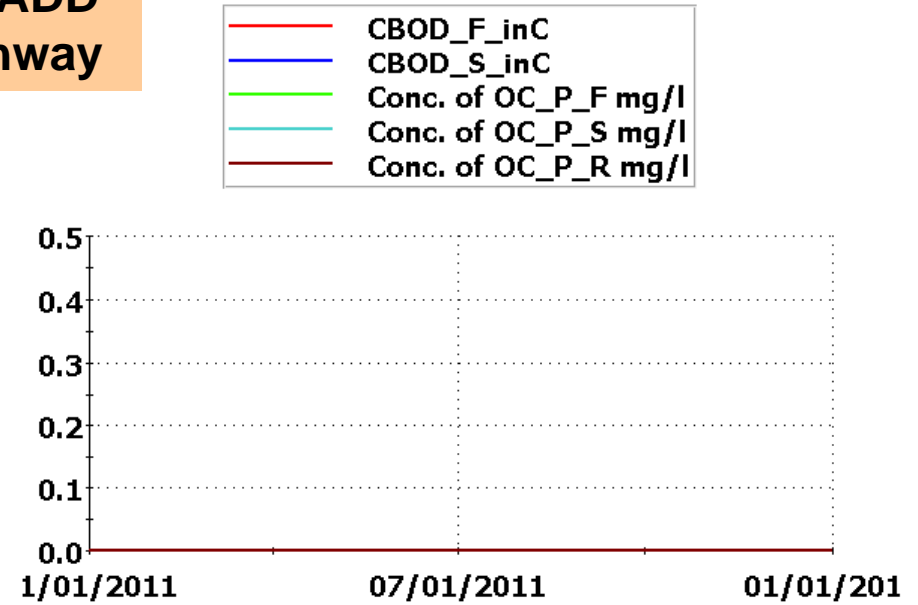
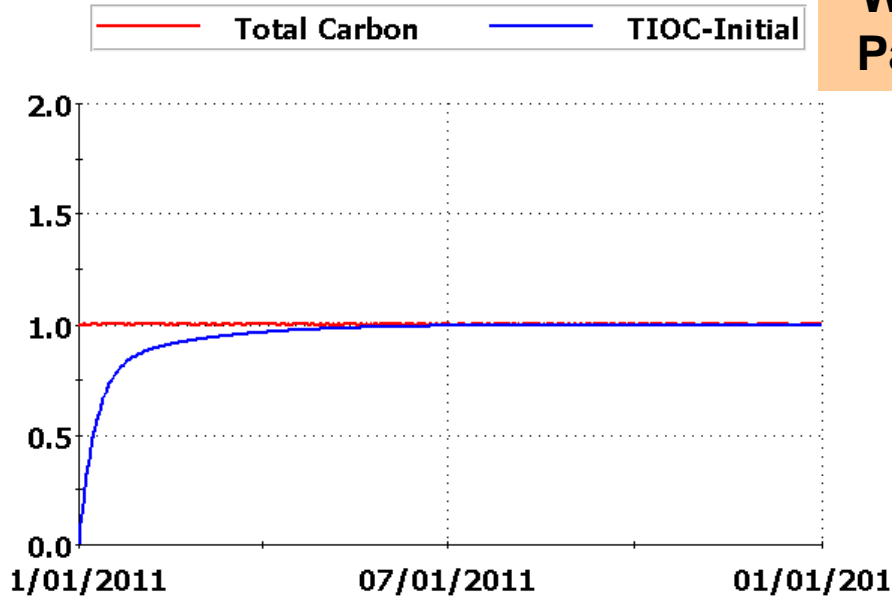
Database: Test 1-4a 03.mdb



Test 1.4b – WQADD Phytoplankton to Inorganic Carbon Pathway in CSTR with No

Database: Test 1-4b WQADD 02.mdb

WQADD Pathway



Test 1.5 – Detritus to Phytoplankton Nutrient Pathway in CSTR with No Flow

